



## Market House, Sawbridgeworth, Herts, CM21 9AX

£1,400 Per Calendar Month



Geoffrey Matthew Property Management are delighted to offer for let, this two bedroom apartment situated within this stunning Grade II listed building. The Market House occupies a prominent position within the much sought after town of Sawbridgeworth. Conveniently situated at the heart of the town on the corner of Knight Street and Bell Street, these prestigious apartments have been finished to an extremely high standard with fitted hi spec kitchens, luxury bathrooms, secured allocated parking within an electric gated car park. Full of character and charm with many original features, walking distance to all amenities including Sawbridgeworth train station, with links to London and Cambridge. Available November.

Viewing is highly recommended.

A holding deposit equivalent to one weeks rent is payable to apply for this property.

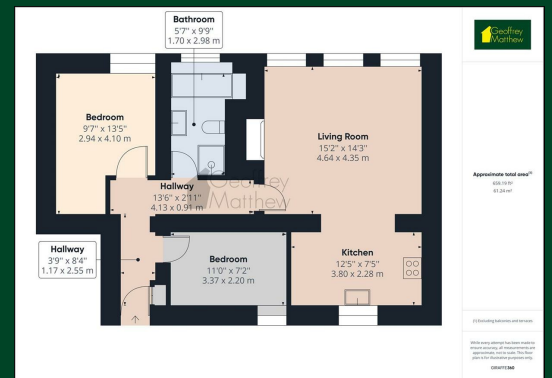


- Lounge 15'2" x 14'3" (4.64 x 4.35)
- Kitchen 12'5" x 7'5" (3.80 x 2.28)
- Bedroom One 9'7" x 13'5" (2.94 x 4.10)
- Bedroom Two 11'0" x 7'2" (3.37 x 2.20)
- Bathroom 5'6" x 9'9" (1.70 x 2.98)

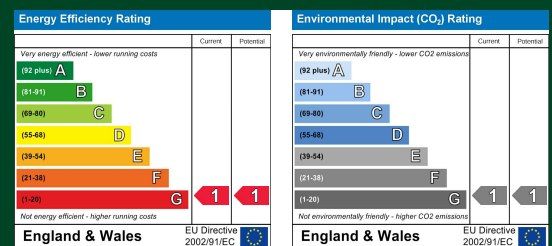
## Area Map



## Floor Plans



## Energy Efficiency Graph



These particulars, whilst believed to be accurate are set out as a general outline only for guidance and do not constitute any part of an offer or contract. Intending purchasers should not rely on them as statements of representation of fact, but must satisfy themselves by inspection or otherwise as to their accuracy. No person in this firm's employment has the authority to make or give any representation or warranty in respect of the property.

Old Harlow: 01279 444988 Email: harlow@geoffreymatthew.co.uk  
 Great Ashby: 01438 740111 Email: greatashby@geoffreymatthew.co.uk